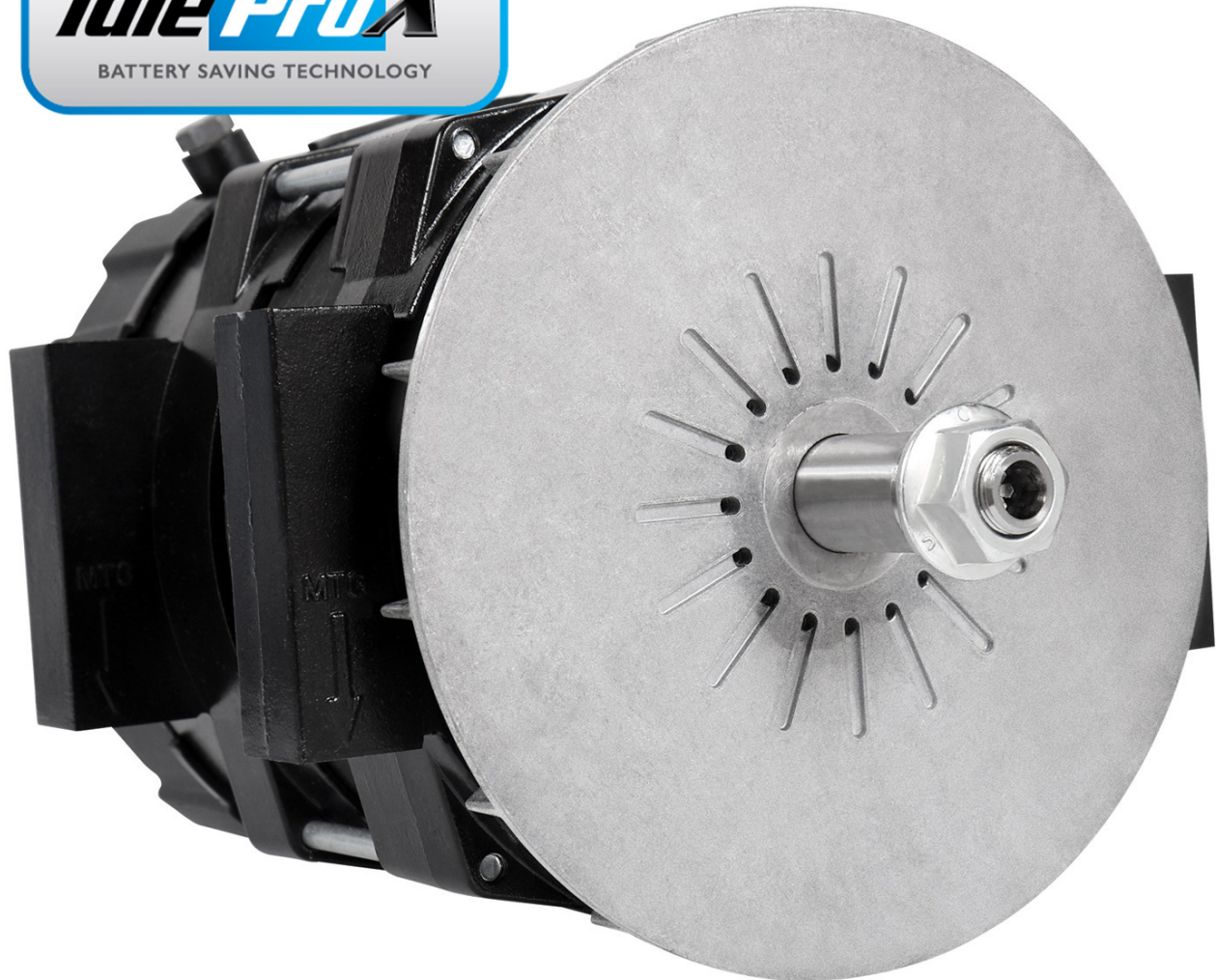




PARTS CAP

Prestolite 
electric

Leece-Neville 
HEAVY DUTY SYSTEMS



IdlePro Extreme[®] 12V & 24V Alternators

The Leece-Neville IdlePro Extreme[®] series alternators offer industry-best output at low engine speeds, utilizing a high-amp, brushless design.

Visit the IdlePro Extreme Website (<https://www.idleproextreme.com>)

Product Highlights (IdlePro Extreme 12V & 24V Alternators)

Auxiliary Draft Cooling Design

Special design that controls temperature of the front bearing - 10 degrees cooler than traditional designs*

Improved Output at Low-Engine Speeds

Minimum of 90% output of unit's rated maximum output at engine idle speed* provides efficient, battery-saving performance

Premium Brushless Design

Best-in-class brushless performance without the weight & size downfalls of conventional alternators

Dual Cable Terminals (B+/B-) Positioned Laterally & Axially

Extends the coverage & convenience of these alternators

Remote Sense Capable

Reduces battery charge time & returns battery to a full state of charge between vehicle stops

Isolated Ground Technology

Reduces stray voltage currents traveling through the engine – reduces component wear & eliminates potentially severe electrolytic damage

Premium Heavy Duty Design

eCoated for superior corrosion resistance & heavy duty housing design improves performance in common extreme operating environments

IdlePro Extreme 12V Alternators

Prestolite Part #	Delco Remy	Niehoff	Unipoint
BLP4003	8600473 8600529 8600629 61006079	C527 C531 C680	
BLP4002H	8600298 8600628		
BLP4004H	8600298 8600628		
BLP4005H	8600707		
BLP4007H	8600338		
BLP4009	8600094		
BLD4012	8600634	C630	ALT-0320

IdlePro Extreme 24V Alternators

Prestolite Part #	Delco Remy	Niehoff
BLP4101H	8600453 8600483 8600581 8600635 8600737 8600739 8600761 8600807	C530 C532
BLP4106	61002316 8600564	
BLD4105	61006083 8600434 8600480	

General Product Information

For more information on IdlePro Extreme® Alternators click [here \(https://www.idleproextreme.com/?utm_source=dtncap&utm_medium=ipx12-24v-btn&utm_campaign=dtncap-pages\)](https://www.idleproextreme.com/?utm_source=dtncap&utm_medium=ipx12-24v-btn&utm_campaign=dtncap-pages).

Warranty Information

IdlePro Extreme 12V:

Highway & Bus 12V Applications, 4-Year/Unlimited Mileage*

IdlePro Extreme 24V:

Medium & Heavy Duty Applications, 3-Year/350,000 Miles*

*Check with your Prestolite representative for more details

Last updated: Tuesday, 25 October 2022 02:54 PM

[^Back to Top](#)

Copyright © Daimler Truck North America LLC. [Privacy Statement, Legal Notices and Terms \(https://daimler-trucksnorthamerica.com/privacy-policy\)](https://daimler-trucksnorthamerica.com/privacy-policy).

All rights reserved. Daimler Truck North America LLC is a [Daimler \(http://www.daimler.com/\)](http://www.daimler.com/) company.