



[www.vdoroadlog.com](http://www.vdoroadlog.com)

# VDO RoadLog™

ELD Compliance | Fleet Management | Compliance Reporting



Authorized Distributor



VDO RoadLog™ is the simple, affordable solution for ELD compliance, fleet management, and compliance reporting.



- VDO RoadLog is available with no monthly fees.
- The built-in thermal printer prints out an instant log to get through inspections faster.
- Includes VDO RoadLog™ Office – online compliance reporting and fleet management.



Whether you're a one-rig owner operator, or a 100-vehicle fleet, VDO RoadLog offers a solution to fit your needs.

VDO RoadLog ELD is a smart, simple choice for ELD mandate compliance. It's easy to install, easy to learn, and easy to use.

Because it prints out an instant paper log, there are no worries about how to transfer your log data to a compliance officer.

VDO RoadLog ELD provides compliance officers with only the information needed for compliance. No personal information is shared.

#### Simple

- Automates compliance
- Makes inspections faster and easier
- Fast, easy data transfer
- Easy access to your logs and reports
- Quick and easy installation

#### Secure

- Shares only the data required for compliance
- 100% secure data transfers
- Provides the security and accessibility of the cloud
- Security of a standalone device
- Keeps your cellphone / tablet data private

#### Safe

- Compliance now and in the future
- Backed by Continental – a global leader in ELD technology
- No inspection hand-off – fixed unit eliminates chances of dropping the device

#### Printable

- Instant log printouts
- No data transfer hassles during inspections
- Looks like traditional log book chart
- Thermal printer means no ink needed
- Best solution when a visual inspection is required

# Which VDO RoadLog ELD is right for your operation?



We offer two versions of the VDO RoadLog ELD.

**VDO RoadLog ELD** has no monthly fees – perfect for owner operators!

**VDO RoadLog ELD Plus** has an affordable monthly fee that gives you cellular connectivity for near real-time track & trace of drivers, vehicles, and loads.

## Both VDO RoadLog ELD and ELD Plus:

- Have a built-in log printer for faster inspections.
- Are VDO certified and FMCSA registered.
- Work with VDO RoadLog Office, our online compliance reporting and fleet management tool.
- Receive GPS signals and input from the vehicle to automatically create an hours of service log (HOS).
- Automatically calculate IRP and IFTA miles-by-state.
- Allow drivers to enter their pre- and post-trip inspections (DVIR) and supporting documents such as fuel purchases, tolls, and meals.
- Create a complete trip record that can be viewed, audited, archived, and printed from VDO RoadLog Office.

## Log in and data transfers

The way you'll log in to VDO RoadLog and transfer trip data depends on which VDO RoadLog ELD you choose.

VDO RoadLog ELD users log in with their USB Driver Key. When their trip is done they download their data to the key, and back at the office they upload their data from the Driver Key to VDO RoadLog Office Solo.

VDO RoadLog ELD Plus users log in with their user name and password. Their data is uploaded from the road, automatically by cellular connection to either VDO RoadLog Office Advanced or Office Premium.

## Mandate compliance now and in the future.

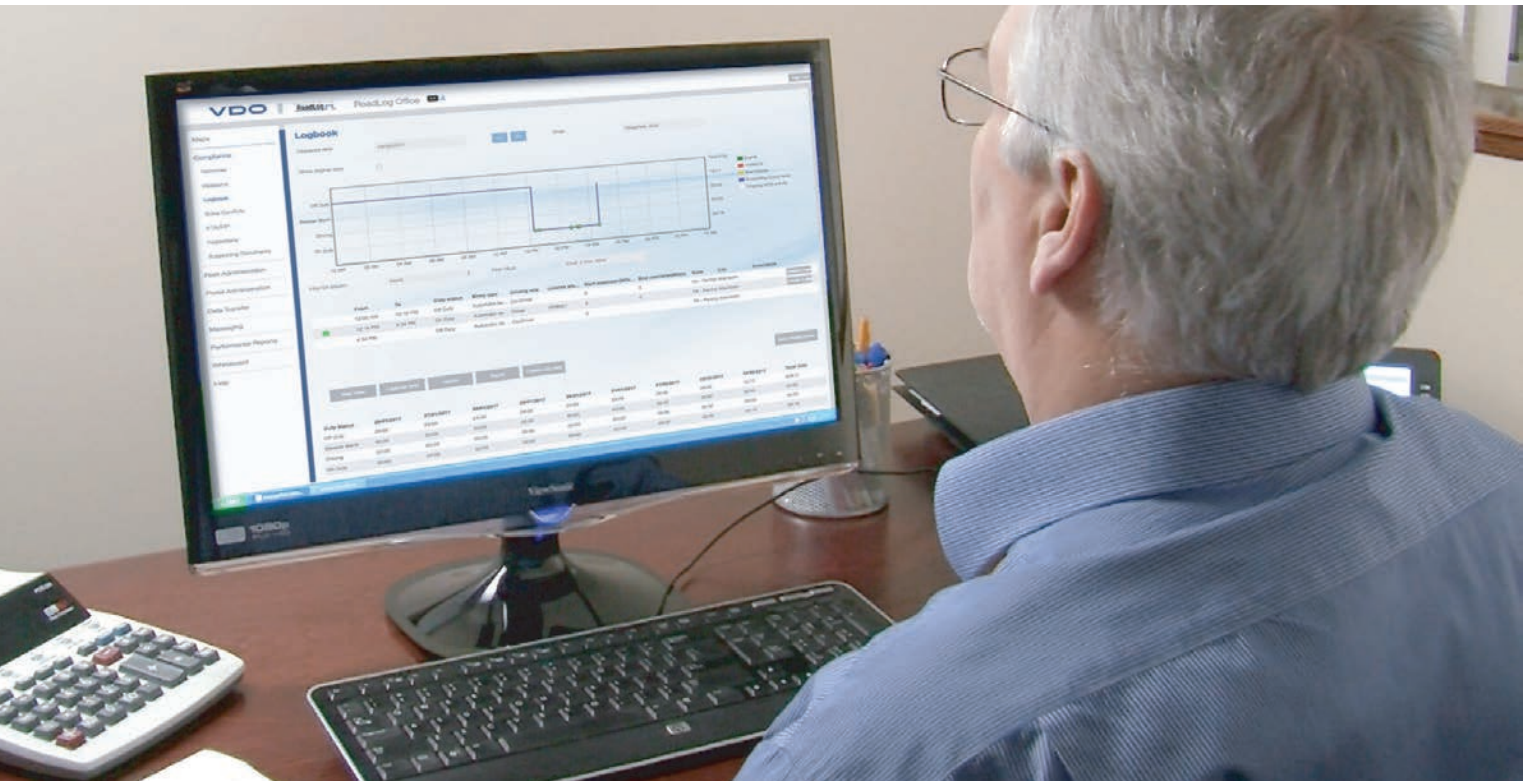
VDO RoadLog is backed by Continental, a worldwide leader in ELD technology with over six million compliance devices in use worldwide. Continental backs VDO RoadLog with free software updates to keep your ELD and compliance reporting up-to-date with changing FMCSA regulations.

So whether you choose the no fees affordability of VDO RoadLog ELD and VDO RoadLog Office Solo, or the cellular connectivity and advanced fleet management features of VDO RoadLog ELD Plus and VDO RoadLog Office Advanced or VDO RoadLog Office Premium, you'll get 100% mandate compliance, now and in the future.

"You hit a button,  
and it prints out  
the last seven days.  
It doesn't get any  
easier than that."

Ivan Tulala  
Owner / Operator  
LNT Enterprises





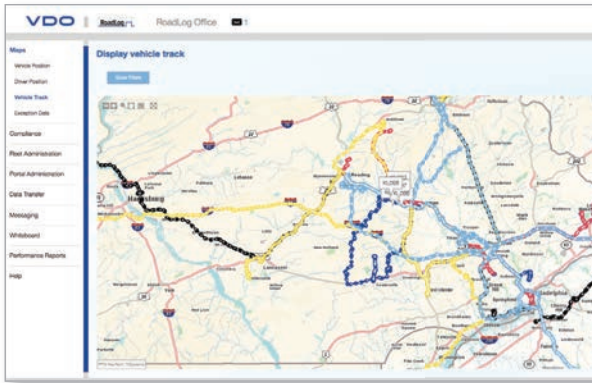
## VDO RoadLog™ Office: automating your compliance reporting and fleet management

VDO RoadLog ELD data for Hours of Service (HOS), International Fuel Tax Agreement (IFTA), International Registration Plan (IRP), and Driver Vehicle Inspection Report (DVIR) is viewed, archived, and edited in VDO RoadLog Office, our online tool for compliance reporting and fleet management. With VDO RoadLog Office, all your log data and compliance reporting records are backed up automatically online.

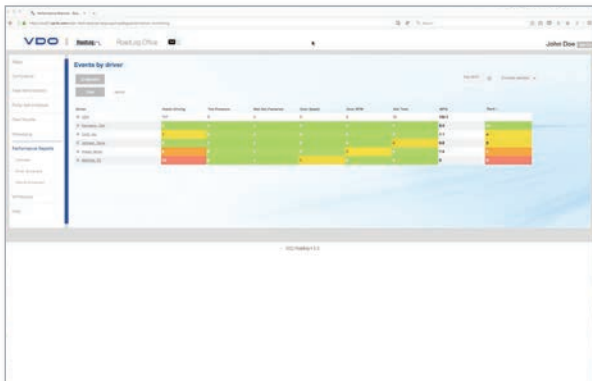
There's no need to worry about paper records or backing up hard drives.

VDO RoadLog Office makes it easy to monitor every part of your operation and is available with a broad range of fleet management and reporting features:

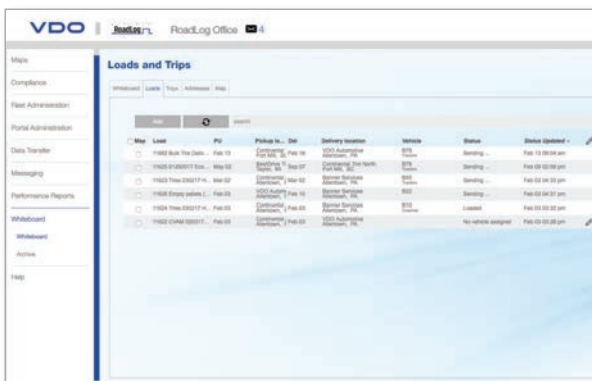
- **Track & Trace mapping –**  
know where your equipment is and where it's been
- **Driver / vehicle monitoring –**  
encourages good driver behavior
- **Remote driver HOS availability –**  
maximize use of personnel and equipment
- **Whiteboard remote fleet management –**  
manage drivers, vehicles, loads and trips remotely
- **Violation overview –**  
automatically compiles and audits data, reducing time and costs
- **Idle times –**  
reduce fuel costs from excessive idling
- **Messaging –**  
safe, text-based messaging with drivers, available only when the vehicle is stopped



Track & Trace Mapping



Driver / Vehicle Monitoring



Whiteboard Remote Fleet Management

## Make your log data work for you – not the other way around

In the days of paper logs, fleets spent hours checking for log problems. Now, VDO RoadLog Office users can just glance at their violations page to see whether regulations were broken and exactly how they were broken.

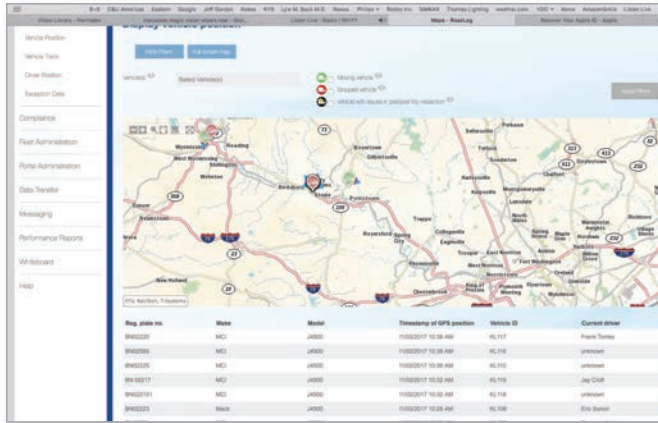
Fleet Managers can use the violations data in their Corrective Action Reports. They can have drivers sign off on the form to indicate that they have been trained and to encourage them not to violate that rule again. This provides a paper trail that shows dedication to compliance and helps reduce the potential for costly fines.

VDO RoadLog Office log data can be exported to PDF or Microsoft Excel, for any driver or group of drivers, for any date or range of dates. The log reports look just like traditional paper logs.

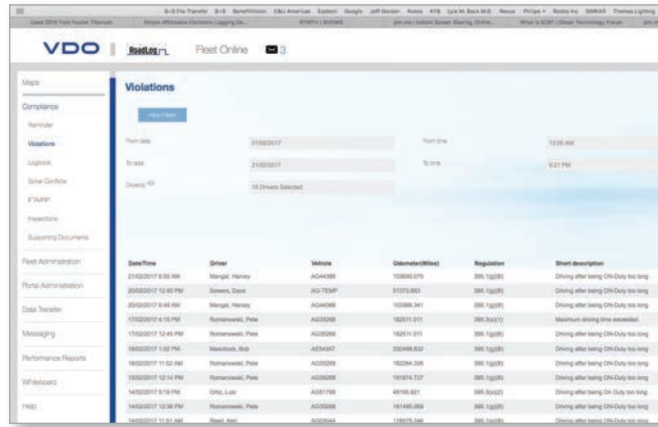
Pre- and post-trip inspection reports from VDO RoadLog Office are printable, so fleets can give their maintenance crews a 'heads up' when something goes wrong. The inspection records are archived within the VDO RoadLog system, eliminating the need for paper inspection records completely.

## Flexible operation.

VDO RoadLog Office is designed to deal with real-world events. For example, if a driver forgets to log out, the record can be edited to show the actual log out time. VDO RoadLog Office saves the original data and can display either the original or the edited data.



**Remote Driver HOS Availability**



**Automatic Violation Audits**

Thinking your fleet will grow?

Maybe you're a small business now, but you believe you'll grow. Choose the VDO RoadLog ELD Plus with cellular connectivity.

That way, you can start with the no monthly fees of VDO RoadLog Office Solo, and when you're ready, migrate up to the enhanced fleet management features of VDO RoadLog Office Advanced or Office Premium.



“What can I say, it works! There's no monthly hook-up fee; you buy it, you put it in the truck, it's yours.

Any time you need Tech Support, you call them up, they will help you. What more could you want?”


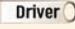
Buster Lewis  
Owner / Operator  
K&L Towing



## VDO RoadLog Office service levels

Our online compliance report and fleet management tool, VDO RoadLog Office is offered with three service levels, allowing you to select the features that are best for your operation. All three service

levels provide you with everything you need for ELD mandate compliance as well as access to your data anywhere and anytime you have an internet connection.

Service Level	VDO RoadLog Office Solo	VDO RoadLog Office Advanced	VDO RoadLog Office Premium
<b>Features</b>	<ul style="list-style-type: none"> <li>No monthly fees</li> <li>Fleet Key &amp; Driver Key(s) required  </li> <li>Activation License is required for each Vehicle.</li> </ul>	<ul style="list-style-type: none"> <li>Affordable monthly fee per vehicle</li> <li>Wireless connectivity</li> <li>Advanced fleet management features</li> </ul>	<ul style="list-style-type: none"> <li>Affordable monthly fee per vehicle</li> <li>Wireless connectivity</li> <li>Advanced fleet management features</li> <li>Remote monitoring / management of drivers, vehicles, loads and trips</li> <li>Messaging to and from drivers</li> <li>Driver performance monitoring</li> </ul>

VDO RoadLog Office capabilities	VDO RoadLog Office Solo	VDO RoadLog Office Advanced	VDO RoadLog Office Premium
<b>Core features:</b>			
• 100% ELD mandate compliance.	✓	✓	✓
• Automatic log auditing.	✓	✓	✓
• Automatic online data backup.	✓	✓	✓
• Available anywhere you have internet service.	✓	✓	✓
• On-screen wizard tips guide you through tasks.	✓	✓	✓
<b>Compliance reporting:</b>			
• Complete electronic log automation. (HOS)	✓	✓	✓
• Automatically calculates IRP and IFTA miles-by-state.	✓	✓	✓
• Automates pre- and post-trip reporting (DVIR).	✓	✓	✓
• Violations are automatically highlighted, printable.	✓	✓	✓
<b>Data transfer:</b>			
• Data import by USB.	✓		
• Wireless data transfer by cellular.		✓	✓
<b>Fleet management:</b>			
• Organize drivers and vehicles into groups.		✓	✓
• Wireless connection to / from the ELD.		✓	✓
• Monitor driver availability remotely.		✓	✓
• Management & monitoring of loads, trips, and driver assignments/status.			✓
• Remote driver performance monitoring – speed, braking, idling.			✓
<b>Map functions:</b>			
• Map shows when and where your vehicles traveled.	✓	✓	✓
• View route history for multiple vehicles over multiple days.	✓	✓	✓
• Near real-time Track & Trace for drivers, vehicles, loads.		✓	✓
• Automatically finds vehicle nearest to new load.			✓
<b>Communications:</b>			
• Text-based messaging to/from ELD.			✓
• Messaging lock-out while in motion.			✓
• Message to one driver or group of drivers/vehicles.			✓
<b>Monthly costs:</b>			
• No monthly fees.	✓		
• Affordable monthly fee per Vehicle.		✓	✓

## VDO RoadLog Office Solo – choose this option for no monthly fees

### VDO RoadLog ELD users upload their data to VDO RoadLog Office Solo – our online compliance reporting and fleet management tool with no monthly fees.

VDO RoadLog Office Solo is the ideal solution to enable owner operators and smaller fleets to become compliant with the upcoming ELD mandate. Solo provides several core components for compliance: Hours of Service (HOS), mileage reporting (IFTA/IRP), and pre- and post-trip inspection reports (DVIR).

#### How VDO RoadLog Office Solo works

Compliance data is collected by the VDO RoadLog ELD and manually downloaded to the Driver Key (USB). Each driver in the fleet will require a Driver Key.

The Driver Key can then be taken to any computer with internet access and a USB port to upload the compliance data to the VDO RoadLog Office Solo web portal. The Solo portal then compiles, audits, and archives a fully compliant record that's available anywhere you have internet access.



#### Here are the components you will need to implement VDO RoadLog Office Solo :

1. **VDO RoadLog ELD (3290-10100101)** one for each vehicle.

**NOTE:** If you might be interested in automatic log data transfer, real-time tracking, and Fleet management features in the future, we recommend purchasing the **VDO RoadLog ELD Plus (3290-20100101)** at a slightly higher price. You can use the ELD Plus with Solo today, then simply contact Continental VDO directly to upgrade when you're ready.

2. **Fleet Key (3290-90030200)** – One Fleet Key is required per company. The Fleet Key is used to setup the VDO RoadLog unit(s) in the vehicle(s).
3. **Driver Key (3290-90030100)** – One Driver Key is required for each driver.
4. **Installation Kit** – One per vehicle.

**IMPORTANT:** The installation cable needs to match the diagnostic port in your vehicle.

<b>Most vehicles use one of these 4 kits</b>	<ul style="list-style-type: none"> <li>– 6 pin Y Install Kit <b>(3290-90100400)</b></li> <li>– 9 pin Y with Flange Green Install Kit <b>(3290-90101300)</b></li> <li>– 9 pin Y with Plastic Nut Green Install Kit <b>(3290-90101400)</b></li> <li>– 16 pin Y OBDII Install Kit (Volvo/Mack 2014 or newer) <b>(3290-90101100)</b></li> </ul>
<b>Other available kits</b>	<ul style="list-style-type: none"> <li>– 6 pin Direct Install Kit <b>(3290-90100200)</b></li> <li>– 9 pin Direct Install Kit <b>(3290-90100100)</b></li> <li>– 9 pin Direct Green Install Kit <b>(3290-90101200)</b></li> <li>– 16 pin Direct OBDII Install Kit (Volvo/Mack 2014 or newer) <b>(3290-90101000)</b></li> <li>– OBDII Light-Duty Streamer Install Kit <b>(3290-90100900)</b></li> <li>– Open End Install Kit <b>(3290-90100800)</b></li> </ul>

An Activation License is required for each RoadLog ELD (\$149.00 per ELD, purchased directly from Continental VDO at time of setup and registration).





Sample VDO RoadLog Office Solo Orders:



- One Truck Owner Operator**
- (1) VDO RoadLog ELD or VDO RoadLog ELD Plus Unit
  - (1) Fleet Key
  - (1) Driver Key
  - (1) Installation Kit

- Five Truck Fleet with 7 Drivers**
- (5) VDO RoadLog ELD or VDO RoadLog ELD Plus Units
  - (1) Fleet Key
  - (7) Driver Keys
  - (5) Installation Kits
  - (4) Activation Licenses

**VDO RoadLog Office Solo Ordering Worksheet**

	Part Number	Quantity	Cost Each	Total
 <b>VDO RoadLog ELD (or ELD Plus)</b>	<b>3290-10100101 (ELD)</b> (ELD Plus part number is <b>3290-20100101</b> for future upgrades)	1 per vehicle: _____	\$ _____	\$ _____
 <b>VDO RoadLog Fleet Key</b>	<b>3290-90030200</b>	1 per Company: <b>1</b>	\$ _____	\$ _____
 <b>VDO RoadLog Installation Kit</b>	See page 14 for our kit selection guide  <b>3290-90100800</b> <b>3290-90100200</b> <b>3290-90100400</b> <b>3290-90101200</b> <b>3290-90101300</b> <b>3290-90101400</b> <b>3290-90100900</b> <b>3290-90101000</b> <b>3290-90101100</b>	1 per vehicle: _____ _____ _____ _____ _____ _____ _____ _____ _____ _____	\$ _____ \$ _____ \$ _____ \$ _____ \$ _____ \$ _____ \$ _____ \$ _____ \$ _____ \$ _____	\$ _____
 <b>VDO RoadLog Driver Key</b>	<b>3290-90030100</b>	1 per Driver: _____	\$ _____	\$ _____
			Total hardware cost:	\$ _____

**An activation license is required for each Vehicle.**

This activation is purchased directly from Continental VDO when you register your account and set up your vehicles in VDO RoadLog Office. Your total cost for setting up operation with VDO RoadLog Office Solo includes the total cost of hardware you purchase from your dealer, plus the total cost of the Activation Licenses you purchase directly from Continental VDO.

	Quantity	Cost Each	Total
<b>VDO RoadLog Activation License(s)</b>	1 per vehicle _____	\$149	\$ _____
		Total cost:	\$ _____

**Account Setup**

Once you have received all of your VDO RoadLog equipment, please go to [www.vdoroadlog.com/startup/](http://www.vdoroadlog.com/startup/) to purchase Activation Licenses, register your account, and setup the VDO RoadLog Office Solo portal for operation.

For additional ordering information and sample online ordering worksheets please go to [vdoroadlog.com](http://vdoroadlog.com)

## VDO RoadLog Office Advanced

## VDO RoadLog Office Premium

Choose either VDO RoadLog Office Advanced or Office Premium for cellular connectivity and advanced fleet management features.

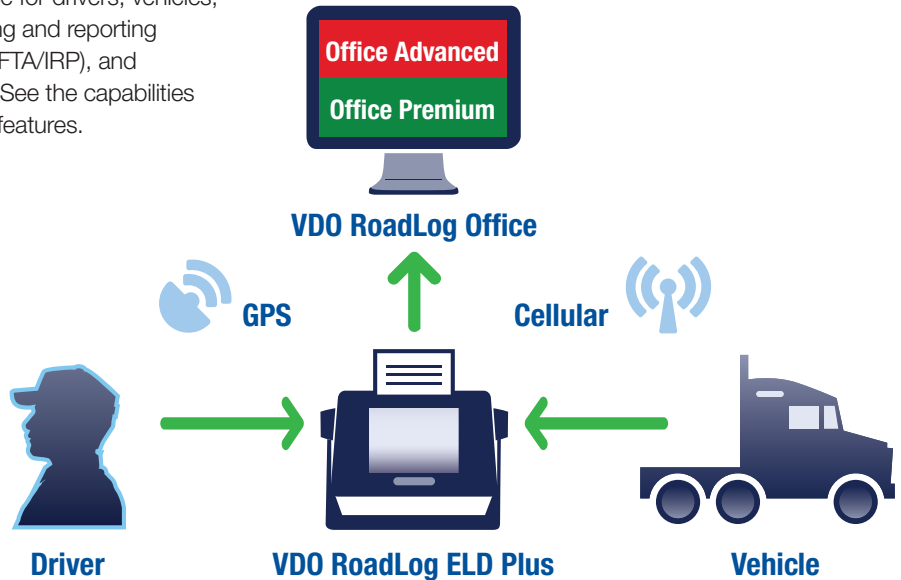
VDO RoadLog Office Advanced and Office Premium not only provide easy compliance with the upcoming ELD mandate, they provide advanced fleet management features previously available only in advanced enterprise-level software packages.

Office Advanced and Office Premium provide advanced features such as near real-time Track & Trace for drivers, vehicles, and loads as well as automation for analyzing and reporting Hours of Service (HOS), mileage reporting (IFTA/IRP), and pre-and post-trip inspection reports (DVIR). See the capabilities chart on page 9 for a comprehensive list of features.

### How VDO RoadLog Office Advanced and Office Premium work

Compliance data is collected by the VDO RoadLog ELD and periodically uploaded by cellular connection to the VDO RoadLog Office portal.

VDO RoadLog Office compiles, audits, and archives your driver data to create a complete compliance record that's available anywhere you have internet access.



With VDO RoadLog Office Advanced or Office Premium, no Driver Keys, Fleet Key, or Activation Licenses are required.

### Here are the components you will need to implement Advanced or Premium:

1. **VDO RoadLog ELD Plus (3290-20100101)** one for each vehicle.
2. **Installation Kit** – One per vehicle.

**IMPORTANT:** The installation cable needs to match the diagnostic port in your vehicle. (See list of available kits below.)

<b>Most vehicles use one of these 4 kits</b>	<ul style="list-style-type: none"><li>– 6 pin Y Install Kit <b>(3290-90100400)</b></li><li>– 9 pin Y with Flange Green Install Kit <b>(3290-90101300)</b></li><li>– 9 pin Y with Plastic Nut Green Install Kit <b>(3290-90101400)</b></li><li>– 16 pin Y OBDII Install Kit (Volvo/Mack 2014 or newer) <b>(3290-90101100)</b></li></ul>
<b>Other available kits</b>	<ul style="list-style-type: none"><li>– 6 pin Direct Install Kit <b>(3290-90100200)</b></li><li>– 9 pin Direct Install Kit <b>(3290-90100100)</b></li><li>– 9 pin Direct Green Install Kit <b>(3290-90101200)</b></li><li>– 16 pin Direct OBDII Install Kit (Volvo/Mack 2014 or newer) <b>(3290-90101000)</b></li><li>– OBDII Light-Duty Streamer Install Kit <b>(3290-90100900)</b></li><li>– Open End Install Kit <b>(3290-90100800)</b></li></ul>

Unlike VDO RoadLog Office Solo, Office Advanced and Office Premium service levels handle License Activation wirelessly and automatically.

The license is tied to the VDO RoadLog ELD Plus itself and automatically transfers from one vehicle to another if a vehicle is sold or removed from the fleet.

Sample VDO RoadLog Office  
Advanced or Office Premium Orders:






**One Truck Owner Operator**

- (1) VDO RoadLog ELD Plus Unit
- (1) Installation Kit

**Five Truck Fleet with 7 Drivers**

- (5) VDO RoadLog ELD Plus Units
  - (5) Installation Kits
- (License activation is handled wirelessly.  
No Fleet or Driver Keys are required.)

VDO RoadLog Office Advanced or Office Premium Ordering Worksheet

	Part Number	Quantity	Cost Each	Total
 <b>VDO RoadLog ELD Plus</b> 	<b>3290-20100101</b>	1 per vehicle: _____	\$ _____	\$ _____
 <b>VDO RoadLog Installation Kit</b>	See page 14 for our kit selection guide  <b>3290-90100800</b> <b>3290-90100200</b> <b>3290-90100400</b> <b>3290-90101200</b> <b>3290-90101300</b> <b>3290-90101400</b> <b>3290-90100900</b> <b>3290-90101000</b> <b>3290-90101100</b>	1 per vehicle: _____ _____ _____ _____ _____ _____ _____ _____ _____ _____	\$ _____ \$ _____ \$ _____ \$ _____ \$ _____ \$ _____ \$ _____ \$ _____ \$ _____ \$ _____	\$ _____ \$ _____ \$ _____ \$ _____ \$ _____ \$ _____ \$ _____ \$ _____ \$ _____ \$ _____
			Total hardware cost:	\$ _____

	Quantity	Cost per month	Total
<b>VDO RoadLog Office Advanced or Office Premium Monthly Fees</b>	_____ 1 _____	\$ _____	\$ _____
		Total cost:	\$ _____

“My drivers are constantly telling me VDO RoadLog is easy to use and it’s less of a problem in their day than a paper log is.”

John Coakley  
Manager of Operations and Safety  
Klein Transportation, Inc.



# VDO RoadLog Installation Kit options

You'll need a cable for each ELD or ELD Plus. The cable comes in a kit that includes cable, mounting bracket, adhesive pad, and wire ties, as well as the 'VDO RoadLog Electronic Driver Logs' cab door sticker. Choose the cable with a pin connection that matches the connection in the vehicle.

**Please note:** due to the wide variety of vehicles and installation configurations in use, an exact cable match for your vehicle cannot be specified below. Always do a visual check of your vehicle's connection against the images shown here, or contact VDO RoadLog Technical Support for additional guidance.

## Included in each VDO RoadLog Installation Cable Kit:



Cable of your choice to match the pin configuration of your vehicle(s)



Mounting bracket and adhesive pad



Cab door sticker

## Cable Application Tips

- **Standard cables** occupy the diagnostic port and must be disconnected to perform diagnostics.
- **Y-cables** retain an open port for fast diagnostics hook-up. The Y-cable contains two diagnostic connectors. One replaces your existing data port, and the other plugs into the existing data port behind the dash for a cleaner look.



### Part # / Description

**Open wire direct wiring installation kit**  
3290-90100800

### Application Tip

- Vehicles with either no diagnostic connector or a special OEM connector can use the Open Wire direct wiring installation cable kit.
- Vehicles built before 1992 typically have Mechanical Fuel Injection, which may require the installation of a speed sensor.
- Vehicles built from 1992 to 1995 with Electronic Fuel Injection may have a 6 pin connector, a special OEM connector or no diagnostic connector port.



**6 pin direct installation kit**  
3290-90100200



- Vehicles built from 1996 to 2001 generally have the 6 pin configuration.
- Vehicles built from 2002 to 2006 may have either the 6 pin or 9 pin configuration.



**6 pin Y-cable installation kit with flange**  
3290-90100400

- Vehicles built from 1996 to 2001 generally have the 6 pin configuration.
- Vehicles built from 2002 to 2006 may have either the 6 pin or 9 pin configuration.

9-pin universal installation kits	Part # / Description	Application Tip
	<b>9 pin direct (green) installation kit</b> 3290-90101200	<ul style="list-style-type: none"> <li>Supports 2015 and newer trucks that utilize 9 pin Type II (green) Deutsch diagnostic ports.</li> <li><b>All 9 pin Type I (black) Deutsch diagnostic ports (pre-2015) require green installation kit cable.</b></li> </ul>
	<b>9 pin Y (green) installation kit with flange</b> 3290-90101300	<ul style="list-style-type: none"> <li>Supports 2015 and newer trucks that utilize 9 pin Type II (green) Deutsch diagnostic ports.</li> <li><b>All 9 pin Type I (black) Deutsch diagnostic ports (pre-2015) require green installation kit cable.</b></li> </ul>
	<b>9 pin Y (green) installation kit with plastic nut</b> 3290-90101400	<ul style="list-style-type: none"> <li>Supports 2015 and newer trucks that utilize 9 pin Type II (green) Deutsch diagnostic ports.</li> <li><b>All 9 pin Type I (black) Deutsch diagnostic ports (pre-2015) require green installation kit cable.</b></li> </ul>
	<b>OBD II Converter installation kit</b> 3290-90100900	<ul style="list-style-type: none"> <li>Light and medium-duty vehicles and vans generally have the 16 pin OBD II configuration and require an OBD II interface unit, which is supplied with the cable.</li> </ul>
	<b>Volvo / Mack 16 pin direct OBD II installation kit</b> 3290-90101000	<ul style="list-style-type: none"> <li>For heavy-duty vehicles, Model Year 2014 or newer</li> </ul>
	<b>Volvo / Mack 16 pin Y-cable OBD II installation kit</b> 3290-90101100	<ul style="list-style-type: none"> <li>For heavy-duty vehicles, Model Year 2014 or newer</li> </ul>

Accessories	Part Number	Description
	<b>VDO RoadLog Replacement Thermal Paper</b> 3290-90010100	<ul style="list-style-type: none"> <li>1 box; 2 rolls per box.</li> <li>Calculate one roll for every four inspection stops.</li> <li>Fade resistant.</li> </ul>
	<b>VDO RoadLog External GPS/GSM Combi-Antenna</b> 3290-90040100	<ul style="list-style-type: none"> <li>Provides clear sight line for uninterrupted GPS/GSM connection.</li> <li>Includes magnetic mounting pad and double-sided adhesive mounting pad.</li> </ul>

## Computer system requirements

**VDO RoadLog ELD, VDO RoadLog ELD Plus,** and **VDO RoadLog Office** (all service levels) can be used with most current personal computers, laptops or tablets that have a USB port and access to the internet.

\*Check website for the most up-to-date computer system requirements.



To enroll in VDO RoadLog Office, go to: [vdoroadlog.com/enroll](http://vdoroadlog.com/enroll)  
or contact VDO RoadLog Technical Support at:  
Tel: (800) 265-1818  
Email: [roadlog-support@vdo.com](mailto:roadlog-support@vdo.com)

## VDO RoadLog – developed by Continental.

Continental is a leading global supplier of systems and components to automobile, truck and bus manufacturers. Our products are present on all heavy and medium-duty trucks in the USA.

Continental is a world leader in Electronic Logging Device technology, with over five million devices in use worldwide. For over 30 years, the company has provided original equipment and aftermarket ELD products to Manufacturers, Drivers, Fleets and Owner Operators around the globe.

VDO RoadLog is the first ELD product from Continental that was designed specifically to provide a simple, affordable and easy-to-use ELD solution for Fleets and Owner Operators in North America.

With more than 80 years of experience in the transportation industry, Continental develops and produces products that make trucking safer, cleaner and more fuel-efficient.

Authorized Distributor



**Distributed by:**

Pana-Pacific  
Contact Pana-Pacific Customer Service at:  
Tel.: (877) 244-4516  
Email: [cs@panapacific.com](mailto:cs@panapacific.com)

**Continental**

Commercial Vehicles & Aftermarket  
6755 Snowdrift Road, Allentown, PA 18106 USA  
[www.vdoroadlog.com](http://www.vdoroadlog.com)

**For Sales Support / Customer Support:**

Tel.: (855) ROADLOG, (855) 762-3564 or (610) 366-8489  
Fax: (800) 752-7224 or (610) 366-9837  
E-mail: [roadlog-sales@vdo.com](mailto:roadlog-sales@vdo.com)

**VDO RoadLog Technical Support**

(Installation and service questions):  
Tel: (800) 265-1818  
E-mail: [roadlog-support@vdo.com](mailto:roadlog-support@vdo.com)

VDO and RoadLog – Trademarks of the Continental Corporation  
©2018 Continental Corporation | A2C59506883 | Printed in the USA

